

RCPL
DELIVERS COMMITMENT



Quality Delivery, On Time... Every Time!

RCPL
DELIVERS COMMITMENT

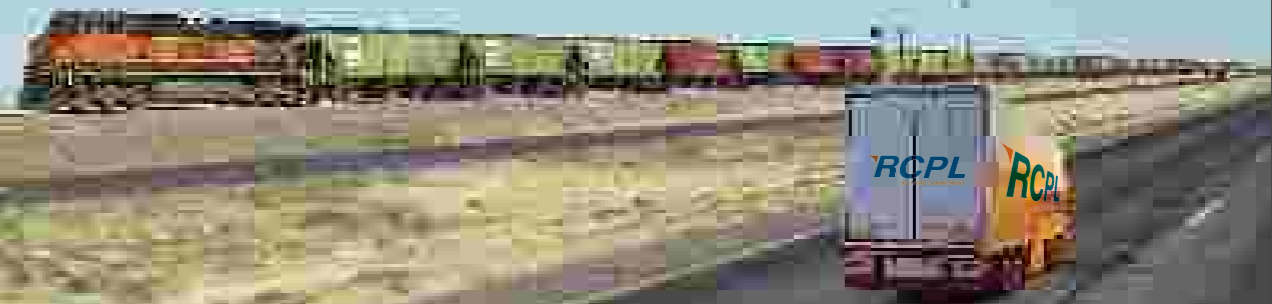
RCPL Logistics Pvt. Ltd.

B-151, Okhla Industrial Area, Phase-I, New Delhi - 110020

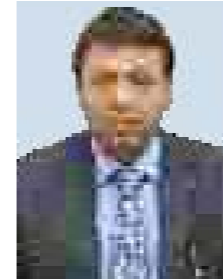
Tel: +91-11-43922222 Mobile : 09313930603

Email : info@rcpl.net.in | Web: www.rcpl.net.in

flagscom.in



“The line between disorder and order lies in **logistics...**”
– Sun Tzu



From the Desk of Managing Director

Dear Friends,

With a bright future outlook let us join hands and walk together towards a grand and successful future. With this, I would like to take benefit of this opportunity and thank our employees, customers, business partners and all other stakeholders for showing faith and investing their time in RCPL.

RCPL with its years of excellent service in safe and secured delivery of cargo on time, every time is always committed to provide 100% customer satisfaction. We focus on improving and increasing our transportation connectivity with each passing day.

It is our endeavor to continuously improve our service offerings and adding new capabilities. Steps are taken to provide highly cost effective and tailor made solutions after thoroughly analyzing the needs and requirements of our customers.


Lastly, it is an honor for me and my team members for the trust our customers have entrusted on us and we are constantly devising new ways and means to take the satisfaction of our customers to the next level of customer delight.

A stylized, handwritten signature in black ink, appearing to read 'Manish Gupta'.

Manish Gupta

Being **RCPL**

DELIVERS COMMITMENT



Incorporated in 1997, RCPL is one of the leaders in multi modal logistic solutions with an aim to provide distinct logistic solutions across the Nation, committed to deliver cargo on time and safely. Under the visionary leadership of Mr. T R Gupta with an intent to provide complete logistic solutions, it has an edge with over 100 delivery destinations, handling capacity of over 2 Lac packages every month, RCPL truly is one of the fastest growing players in the arena. RCPL is a multi-modal service provider and offers the most efficient delivery schedules through Air, Train and Surface Express.

Employing over 400 industry professionals; it is rightfully spearheaded by Mr Manish Gupta, Managing Director, under whose supervision the company has witnessed exponential growth, brand rejuvenance and attained various benchmarks, achievements and satisfaction of its customers, with a single motive of keeping Customer Satisfaction First.

“Happiness through Service”



Vision

On Time and Safe are the two keywords at RCPL. Dedicated to be an on-time and safe logistic delivery organization with a focus on customer delight; respect and commitment to employees and community.

Mission

We are committed to deliver by blending, efficient operations with effective time management and ensuring the achievement of our goals

To embrace the challenges en route we ensure the following:

- Attaining leadership through state-of-the-art technology by integrating transportation and communications system
- Save time and money of customer
- Continuous improvement in services
- Setting the highest standards of business ethics

Quality

RCPL follows a rigorous quality assurance process, by delivering products in a safe and secure manner to all its customers. Goods are checked thoroughly for proper packaging at the time of receiving of goods, in transit and at the time of delivery. If its RCPL it's got to be Quality, “as we believe custodian first, carrier later.”

When it comes to door to door domestic cargo movement solutions, RCPL is one name that's set a benchmark within the industry and outside. With precision in delivery and safe cargo handling, it is one of the best logistic solution providers. Our core areas of operation are:

Areas of operation



Air Cargo



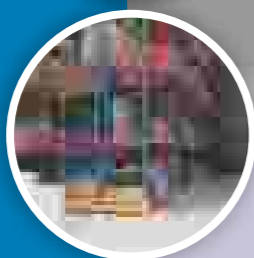
Train Cargo



Surface Express Cargo



Packaging Solutions



Warehousing





Air Cargo

RCPL is equipped to cater time sensitive AIR consignments with the monitoring from dedicated CRM teams & offices at major airports. RCPL has arrangement with all Airlines for the upliftment of Air Cargo. We maintain a delivery schedule from 24 to 48 hours at the time of air cargo delivery. Our air cargo operations work round the clock to ensure that you receive your cargo delivery always on time.



Train Cargo

RCPL maintains separate train hubs at each station in order to avoid any mix up of cargo and all our handling units at train stations are 24 hours operational in order to maintain delivery of cargo in scheduled time. Additionally, RCPL has tie ups with SLR / VPU coaches in almost all express trains.

The RCPL trains operation team is specifically trained for handling train consignments in limited time as cargo is transferred in public trains and not in cargo train. We also provide customized premium train cargo space as per your requirement.



RCPL
DELIVERS COMMITMENT
RCPL Logistics Pvt.Ltd.

Surface Express Cargo

At RCPL Express cargo is handled through the Hub and Spoke system wherein, the cargo is shipped from different locations to a centralized hub. The cargo is then segregated as per the spokes or the routes and is dispatched accordingly. The RCPL surface network covers the delivery of cargo Pan India.

All containers used during the transit of cargo through the surface are tested to withstand extreme weather conditions and are 100% leak proof, GPS enabled to track, so that your cargo is secure and is delivered safely.



Warehousing

The strategically located warehouses of RCPL ensure that it can reach and deliver cargo to any part of the country and marks its national presence. Currently, RCPL operates with 10 warehouses. All RCPL warehouses are equipped with state-of-the-art technology and CCTV cameras are installed in order to maintain the safety and security of your goods.



Packaging Solutions

At RCPL, we understand that safe packaging is imperative towards the efficient delivery of your cargo. In order to handle your shipment with utmost care, we at RCPL use a wide variety of packing solutions be it for heavy materials or fragile items, we ensure that each item is treated with care and value.

We ensure that we use appropriate size boxes as per the weight of your consignment. Cartons and packaging used are firm and rigid in nature, which adds to our commitment of safe delivery.

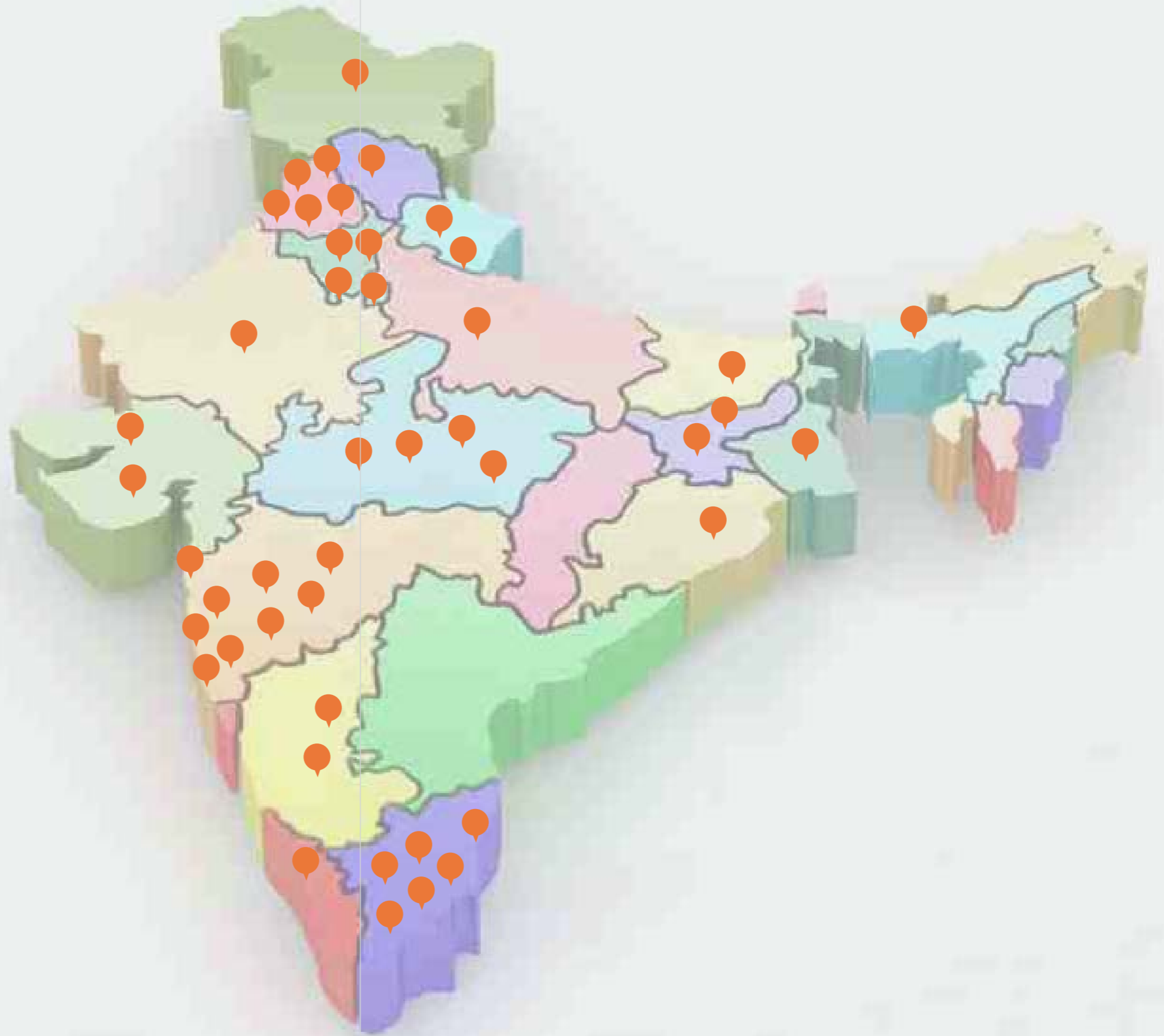
We provide value added services as per our client's requirement. At RCPL, client satisfaction is our primary objective and thus we leave no stone unturned to attain this at all times.



Manpower & Team

Since the beginning, RCPL has been a people oriented organization, be it our employees or our customers. We have always been a thorough promoter of cultural and ethnic diversity in our teams. Our employees are the backbone of our organization and in order to encourage them we have incorporated rewards and recognition program and we encourage our employees to grow up the ladder within the organization.





Network

RCPL today prides itself in having one of the largest network of warehouses, regional offices and hubs across 100 various locations Pan India. Here's a quick snapshot of our presence:

We care about our Environment

Environmental degradation is inevitable, however, at RCPL we still try and ensure that practices are undertaken to reduce the overall carbon footprint on the environment. Practices which can be followed as a part of continuous improvement in the internal processes such as streamlining warehouse operations, calculating and reviewing the fuel emissions, timely pollution check of the fleet of trucks, and using containers made from recycled and reused steel.

Further, reducing or eliminating the excessive use of paper for the transaction, reusing the packaging material, optimizing schedule of delivery routes enable RCPL to contribute towards a green environment and at the same time these methods, improve the cost efficiency and bottom line of the organization.



Air Cargo



Quality Assurance



RCPL in Pictures



Warehousing



Surface Express Cargo

Air Cargo

Surface Express Cargo

Train Cargo

Warehousing



Train Cargo



Packaging Solutions

Packaging Solutions

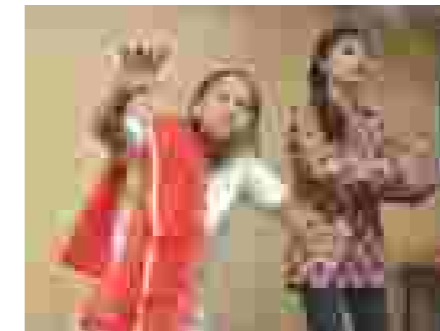
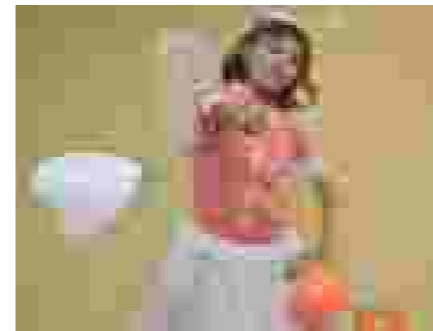


Team RCPL

Integrating Commitments

Project Arunabh

An Intervention Center for Differently Abled Children RCPL being a committed and a truly responsible organization has ensured that it provides for the society at large which has enabled RCPL group to flourish over the years. For long we had a vision to create a world of opportunities for those who need different things and have special needs.



To fulfill this vision RCPL has joined hands with Shri Devi MatoShri Samajik Seva Sansthan and conceptualized ARUNABH, a center for differently able children in 2010, based at Indore, Madhya Pradesh. It is a venture supported by RCPL for those who need our love, care and efforts to stand independently and with respect in the society.

Arunabh is a non-government and not-for-profit organization in Indore, Madhya Pradesh, India. At Arunabh, we aim to create awareness regarding disorders such as Autism and other disabilities such as Dyslexia, etc. Arunabh imparts knowledge to develop behavioral, social and life skills to make them self reliant. Efforts are put in to improve mental, emotional and physical health of children and adults both. Arunabh assists them with placements to make them financially self reliant and undertake regular trainings for the trainers, in order to, upgrade them.



TEACH FOR INDIA

www.teachforindia.org



Teach For India is a journey of learning and living its core values, i.e. Seva, Teamwork, Integrity, Respect and Humility, Resourcefulness, Excellence, Sense of Possibility, and Reflection.

At Teach For India every single child matters. Believing that every child can and must attain an excellent education. In order to achieve this, it creates a movement of leaders across all sectors that are committed to, and will work towards, ending educational inequity in our country.

RCPL has been supporting this cause alongside and aims at having an India where not just some, but each and every child gets a quality education.

RCPL has always been passionately supporting CSR activities and this one such, step towards it.



Future Outlook

With the overall improvement in the economy RCPL is steadfastly focused towards shaping a better tomorrow for the inbound logistic operations. It is our conscious effort to improve customer interaction and satisfaction by investing in improving the internal operational efficiency, warehousing facilities, fleet management, use of better technology for database management and real time information sharing, and encouraging research and development of cost effective ways of delivery and to attain excellence in delivery processes in order to eliminate inefficiencies.

Clients

RCPL prides itself in working with some of the best names in the industry. Some of the illustrious ones being:



Charting the Way to Success

DELIVERING
100 locations across the nation

FLEET OF
200 weather-proof containers

HANDLING
2,00,000 packages every month

24 Hours a Day, 365 Days a Year -
Operations round-the-clock

